



8. IPHNM10



11. IPH10/E



9. IPHTONZ/IPHSZ



12. IPHOZ



10. IPH10



13. IPBC



10. IPH10



14. IPHG(U)Z



15. IPPE

HORIZONTAL TRANSPORT OF PLATES

- | | |
|----------------------|--|
| IPHNM10 | 8. Non marring |
| IPHTONZ/IPHSZ | 9. Non sagging |
| IPH10 | 10. Non sagging, with magnets, torsion spring and handle |
| IPH10/E | 11. Non sagging, with handle |
| IPHOZ | 12. Sagging plates |
| IPBC | 13. With pretension |
| IPHG(U)Z | 14. With locking device |
| IPPE | 15. Bundles of plates |



NON MARRING

The IPHNM10 horizontal lifting clamps have a pretension feature that allows the user to attach the clamps to the material for horizontal lifting and transfer of non-sagging material. To be used where material surface must not be damaged. This also applies for materials with a very smooth surface, composites and coated plates or plates with a very hard surface.

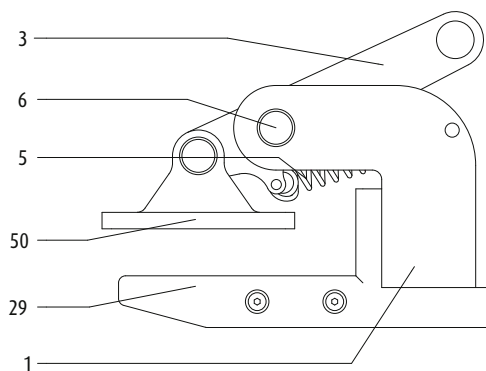
For correct use of the clamp, please consult fig. 2 & 3.

These clamps must be used in pairs or more.



IPHNM10

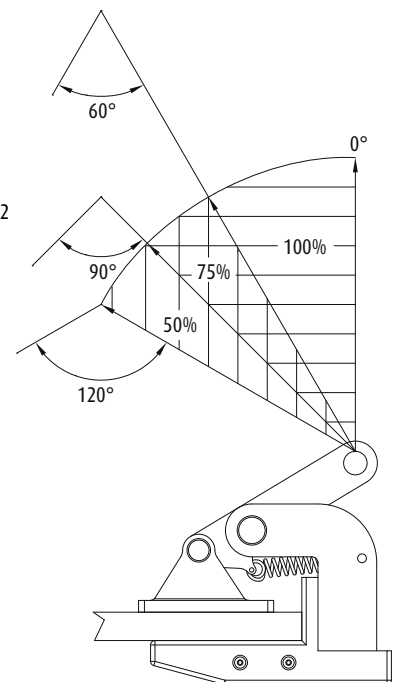
fig. 1



Spare parts for IPHNM10 lifting clamps: Order no.

3. camsegment complete	1234
5. spring for latch complete	1063
6. camsegment shaft complete	1046
29. safety cap complete	1346
50. clamping plate complete	1691

fig. 2



Dimensions in mm

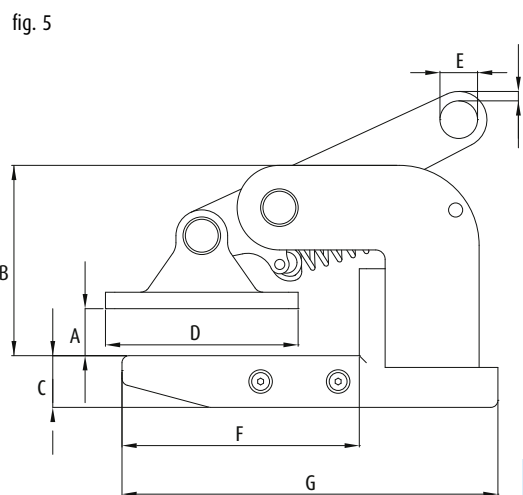
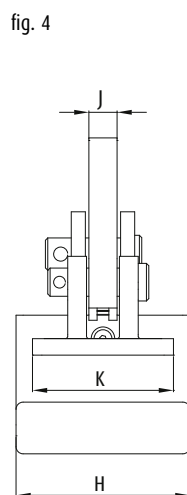
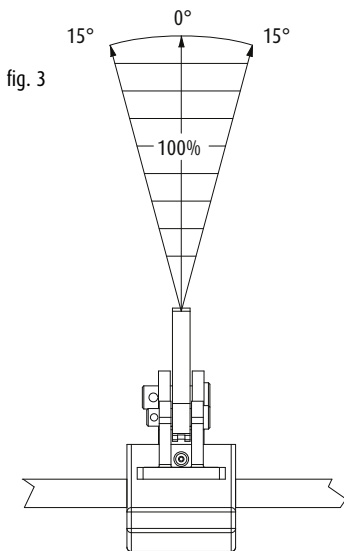
Model	Stock No.	WLL Per Pair (t.)	Weight Per Pair (kg.)	Jaw A	B	C	D	E	F	G	H	J	K	L
0,5 IPHNM10	3287	0,5	4,0	0-20	81	22	82	16	101	160	74	12	60	4
1 IPHNM10	3288	1,0	7,0	0-35	93	30	92	16	103	164	74	12	60	7
2 IPHNM10	3290	2,0	15,0	0-30	139	30	131	22	166	245	100	20	74	9
2 IPHNM10/J	3291	2,0	16,0	30-60	169	30	131	22	166	245	100	20	74	9

* Design Factor based on EN 13155, and ASME B30.20.

Tlf./Phone + 47 63 87 10 80 www.transportutstyr.no



- Available in capacities of 0.5 and 2 metric tons.
- Jaw openings available: 0 to 60mm | 0" - 2.38".
- Welded alloy steel body for strength and smaller size. Forged alloy components, where required.
- Individually Proof Tested to 2 times the Working Load Limit with certification.
- Company name (CrosbyIP), logo, Working Load Limit and jaw opening permanently stamped on body.
- Each product is individually serialized, with the serial number and Proof Load test date stamped on body. Serial number is included on the test certificate with maintenance and warranty logbook.
- Maintenance replacement parts are available.
- Manufactured by a ISO 9001 facility.
- All sizes are RFID EQUIPPED.



Dimensions in inches

Model	Stock No.	WLL Per Pair (t.)	Weight Per Pair (lbs.)	Jaw A	B	C	D	E	F	G	H	J	K	L
0.5 IPHNM10	2703287	0.5	8.82	0 - .75	3.19	.87	3.23	.63	3.98	6.30	2.91	.47	2.36	.16
1 IPHNM10	2703288	1.0	15.4	0 - 1.38	3.66	1.18	3.62	.63	4.06	6.46	2.91	.47	2.36	.28
2 IPHNM10	2703290	2.0	33.1	0 - 1.19	5.47	1.18	5.16	.87	6.54	9.65	3.94	.79	2.91	.35
2 IPHNM10/J	2703291	2.0	35.3	1.19 - 2.38	6.65	1.18	5.16	.87	6.54	9.65	3.94	.79	2.91	.35

* Design Factor based on EN 13155, and ASME B30.20.





IPHTONZ/IPHSZ

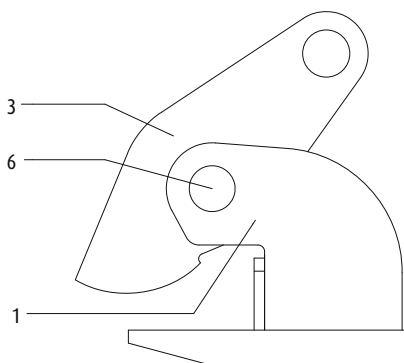
NON-SAGGING MATERIALS

The IPHTONZ/IPHSZ horizontal lifting clamps are used for use in the lifting and transfer in horizontal position of non-sagging materials or of bundles of non-sagging material.

For correct use of the clamp, please consult fig. 2 & 3.

These clamps must be used in pairs or more.

fig. 1

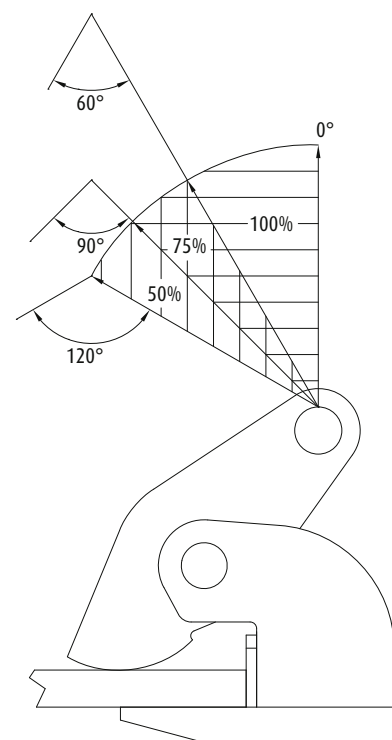


Spare parts for IPHTONZ and IPHSZ lifting clamps:

1. body complete
3. camsegment complete
6. camsegment shaft complete

Order no.	1041
	1234
	1046

fig. 2



Dimensions in mm

Model	Stock No.	WLL Per Pair (t.)	Weight Per Pair (kg.)	Jaw A	B	C	D	E	F	G	H	J	K	L
0,75 IPHTONZ	5343	0,75	4,0	0-30	75	16	-	16	64	118	81	12	46	7
1,5 IPHTONZ	5344	1,5	9,0	0-60	114	16	-	22	87	153	110	16	52	9
3 IPHTONZ	5477	3,0	14,0	0-60	117	20	-	26	87	163	120	20	69	11
4,5 IPHTONZ	5483	4,5	20,0	0-60	132	25	-	30	87	183	130	20	69	12
6 IPHTONZ	5484	6,0	25,0	0-60	143	25	-	36	96	213	130	20	69	14
9 IPHTONZ	5485	9,0	31,0	0-60	157	30	-	43	110	223	140	25	86	16
12 IPHTONZ	5486	12,0	41,0	0-60	172	30	-	47	120	254	150	25	88	17
15 IPHTONZ	5487	15,0	54,0	0-60	183	30	-	47	130	284	200	25	88	22
25 IPHTOZ	5119	25,0	78,0	0-60	169	40	-	47	170	300	220	32	113	22
3 IPHSZ	5308	3,0	22,0	0-100	192	20	-	26	160	222	140	20	65	11
6 IPHSZ	5311	6,0	36,4	0-100	200	25	-	32	160	249	180	20	69	14
9 IPHSZ	5313	9,0	49,2	0-100	220	30	-	35	170	270	190	25	85	18
12 IPHSZ	5318	12,0	62,8	0-100	220	35	-	47	170	270	200	25	95	18

* Design Factor based on EN 13155, and ASME B30.20.

Tlf./Phone + 47 63 87 10 80 www.transportutstyr.no



- Available in capacities of 0.75 thru 25 metric tons (Higher WLL and jaw openings are available upon request).
- Wide variety of jaw openings available: 0 to 100mm | 0" - 4".
- Welded alloy steel body for strength and smaller size. Forged alloy components, where required.
- Individually Proof Tested to 2 times the Working Load Limit with certification.
- Company name (CrosbyIP), logo, Working Load Limit and jaw opening permanently stamped on body.
- Each product is individually serialized, with the serial number and Proof Load test date stamped on body. Serial number is included on the test certificate with maintenance and warranty logbook.
- Maintenance replacement parts are available.
- Manufactured by a ISO 9001 facility.
- All sizes are RFID EQUIPPED.

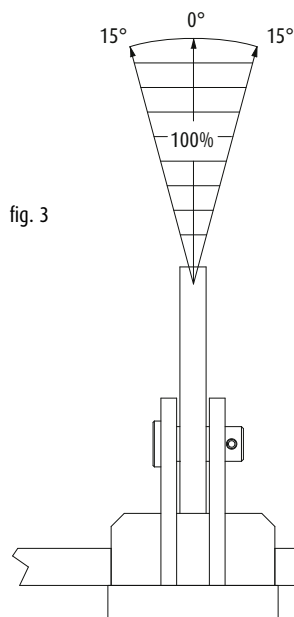


fig. 3

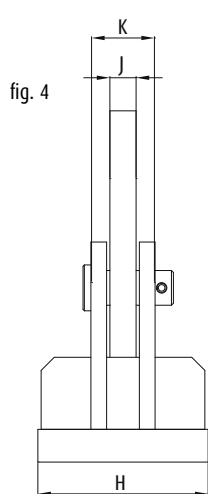


fig. 4

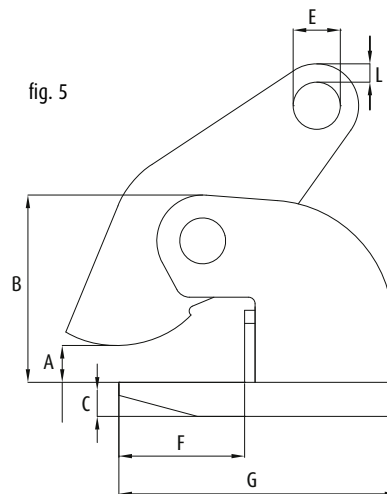


fig. 5

Dimensions in inches

Model	Stock No.	WLL Per Pair (t.)	Weight Per Pair (lbs.)	Jaw A	B	C	D	E	F	G	H	J	K	L
0.75 IPHTONZ	2705343	0.75	8.82	0 - 1.19	2.95	.63	-	.63	2.52	4.65	3.19	.47	1.81	.28
1.5 IPHTONZ	2705344	1.5	19.8	0 - 2.38	4.49	.63	-	.87	3.43	6.02	4.33	.63	2.05	.35
3 IPHTONZ	2705477	3.0	30.9	0 - 2.38	4.61	.79	-	1.02	3.43	6.42	4.72	.79	2.72	.43
4.5 IPHTONZ	2705483	4.5	44.1	0 - 2.38	5.20	.98	-	1.18	3.43	7.20	5.12	.79	2.72	.47
6 IPHTONZ	2705484	6.0	55.1	0 - 2.38	5.63	.98	-	1.42	3.78	8.39	5.12	.79	2.72	.55
9 IPHTONZ	2705485	9.0	68.3	0 - 2.38	6.18	1.18	-	1.69	4.33	8.78	5.51	.98	3.39	.63
12 IPHTONZ	2705486	12.0	90.4	0 - 2.38	6.77	1.18	-	1.85	4.72	10.00	5.91	.98	3.46	.67
15 IPHTONZ	2705487	15.0	119	0 - 2.38	7.20	1.18	-	1.85	5.12	11.18	7.87	.98	3.46	.87
25 IPHTOZ	2705119	25.0	172	0 - 2.38	6.65	1.57	-	1.85	6.69	11.81	8.66	1.26	4.45	.87
3 IPHSZ	2705308	3.0	48.5	0 - 4.00	7.56	.79	-	1.02	6.30	8.74	5.51	.79	2.56	.43
6 IPHSZ	2705311	6.0	80.2	0 - 4.00	7.87	.98	-	1.26	6.30	9.80	7.09	.79	2.72	.55
9 IPHSZ	2705313	9.0	108	0 - 4.00	8.66	1.18	-	1.38	6.69	10.63	7.48	.98	3.35	.71
12 IPHSZ	2705318	12.0	138	0 - 4.00	8.66	1.38	-	1.85	6.69	10.63	7.87	.98	3.74	.71

* Design Factor based on EN 13155, and ASME B30.20.





FOR HORIZONTAL LIFTING AND TRANSFER - WITH MAGNETS, TORSION SPRING AND HANDLE

The IPH10 clamps are suitable for the lifting and transfer in horizontal position of non-sagging steel plates.

The most important addition is the use of magnets which ensure the clamps remain in the proper position on the plate. The clamp is also equipped with a handle and torsion spring that combines to make the placing of the clamp onto the plate quick and easy.

*The 0.5 and 1 capacity is not equipped with magnets and a handle.

For correct use of the clamp, please consult fig. 2 & 3.
These clamps must be used in pairs or more.



fig. 1

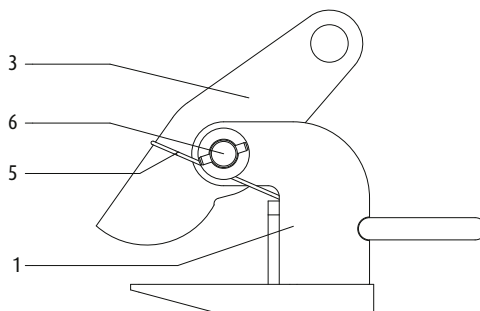
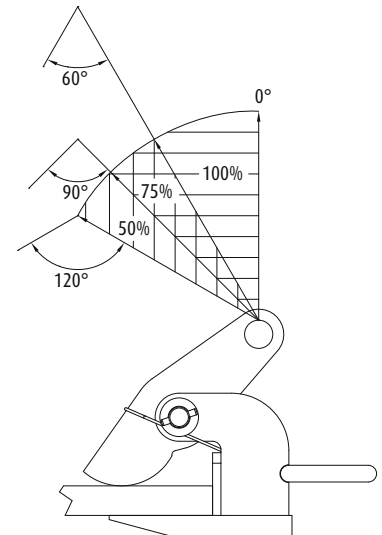


fig. 2



Spare parts for IPH10 lifting clamps:

	Order no.
1. body complete	1041
3. camsegment complete	1234
5. spring for latch complete	1063
6. camsegment shaft complete	1046
56. magnet complete	1856

Dimensions in mm

Model	Stock No.	WLL Per Pair (t.)	Weight Per Pair (kg.)	Jaw A	B	C	D	E	F	G	H	J	K	L
*0,5 IPH10	3297	0,5	3,6	0-20	86	12	-	16	103	150	60	12	27	4
*1 IPH10	3298	1,0	5	0-35	100	16	-	16	103	150	60	12	31	7

* No magnets and handle

Model	Stock No.	WLL Per Pair (t.)	Weight Per Pair (kg.)	Jaw A	B	C	D	E	F	G	H	J	K	L
2 IPH10	3522	2,0	11,0	0-60	117	16	-	22	109	256	110	20	40	9
3 IPH10	3523	3,0	15,0	0-60	117	20	-	26	109	266	120	20	48	11
4,5 IPH10	3524	4,5	21,0	0-60	132	25	-	30	104	280	130	20	48	12
6 IPH10	3525	6,0	26,0	0-60	143	25	-	36	123	320	130	20	48	14
9 IPH10	3526	9,0	37,0	0-60	157	30	-	43	133	330	140	25	62	16
12 IPH10	3527	12,0	43,0	0-60	172	30	-	47	141	353	150	25	62	17

Model	Stock No.	WLL Per Pair (t.)	Weight Per Pair (kg.)	Jaw A	B	C	D	E	F	G	H	J	K	L
3 IPH10/J	3533	3,0	18,0	60-120	177	20	-	26	109	266	120	20	48	9
4,5 IPH10/J	3534	4,5	24,0	60-120	192	25	-	30	104	280	130	20	48	11
6 IPH10/J	3535	6,0	30,0	60-120	203	25	-	36	123	320	130	20	48	12
9 IPH10/J	3536	9,0	41,0	60-120	217	30	-	43	133	330	140	25	62	14
12 IPH10/J	3537	12,0	48,0	60-120	232	30	-	47	141	353	150	25	62	16

* Design Factor based on EN 13155, and ASME B30.20.

Tlf./Phone + 47 63 87 10 80 www.transportstyr.no



- Available in capacities of 0.5 thru 12 metric tons (Higher WLL and jaw openings are available upon request).
- Wide variety of jaw openings available: 0 to 120mm | 0" - 4.75".
- Welded alloy steel body for strength and smaller size. Forged alloy components, where required.
- Individually Proof Tested to 2 times the Working Load Limit with certification.
- Company name (CrosbyIP), logo, Working Load Limit and jaw opening permanently stamped on body.
- Each product is individually serialized, with the serial number and Proof Load test date stamped on body. Serial number is included on the test certificate
- With maintenance and replacement warranty logbook.
- Manufactured by a ISO 9001 facility.
- All sizes are RFID EQUIPPED.



IPH10 with spring

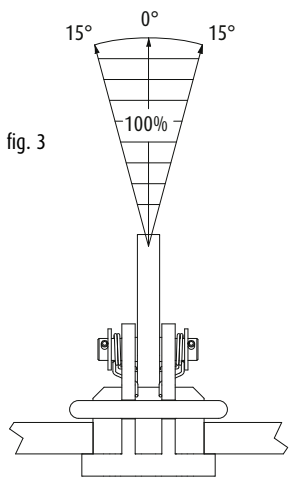


fig. 3

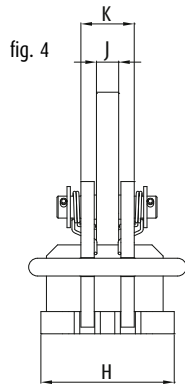


fig. 4

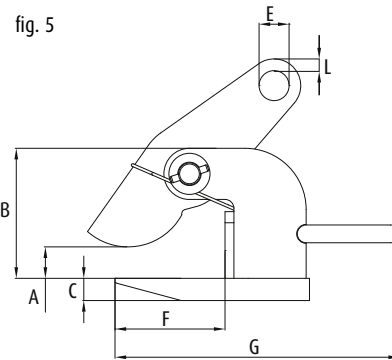


fig. 5

fig. 6
With Spring

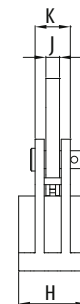
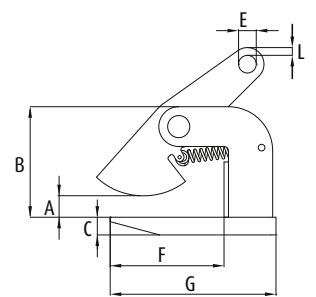


fig. 7
With Spring



Dimensions in inches

Model	Stock No.	WLL Per Pair (t.)	Weight Per Pair (lbs.)	Jaw A	B	C	D	E	F	G	H	J	K	L
*0.5 IPH10	2703297	0.5	7.94	0 - .75	3.39	.47	-	.63	4.06	5.91	2.36	.47	1.06	.14
*1 IPH10	2703298	1.0	11.0	0 - 1.38	3.94	.63	-	.63	4.06	5.91	2.36	.47	1.22	.20

* No magnets and handle

Model	Stock No.	WLL Per Pair (t.)	Weight Per Pair (lbs.)	Jaw A	B	C	D	E	F	G	H	J	K	L
2 IPH10	2703522	2.0	24.3	0 - 2.38	4.61	.63	-	.87	4.29	10.08	4.33	.79	1.57	.35
3 IPH10	2703523	3.0	33.1	0 - 2.38	4.61	.79	-	1.02	4.29	10.47	4.72	.79	1.89	.43
4.5 IPH10	2703524	4.5	46.3	0 - 2.38	5.20	.98	-	1.18	4.09	11.02	5.12	.79	1.89	.47
6 IPH10	2703525	6.0	57.3	0 - 2.38	5.63	.98	-	1.42	4.84	12.60	5.12	.79	1.89	.55
9 IPH10	2703526	9.0	81.6	0 - 2.38	6.18	1.18	-	1.69	5.24	12.99	5.51	.98	2.44	.63
12 IPH10	2703527	12.0	94.8	0 - 2.38	6.77	1.18	-	1.85	5.55	13.90	5.91	.98	2.44	.67

Model	Stock No.	WLL Per Pair (t.)	Weight Per Pair (lbs.)	Jaw A	B	C	D	E	F	G	H	J	K	L
3 IPH10/J	2703533	3.0	39.7	2.38 - 4.75	6.97	.79	-	1.02	4.29	10.47	4.72	.79	1.89	.43
4.5 IPH10/J	2703534	4.5	52.9	2.38 - 4.75	7.56	.98	-	1.18	4.09	11.02	5.12	.79	1.89	.47
6 IPH10/J	2703535	6.0	66.1	2.38 - 4.75	7.99	.98	-	1.42	4.84	12.60	5.12	.79	1.89	.55
9 IPH10/J	2703536	9.0	90.4	2.38 - 4.75	8.54	1.18	-	1.69	5.24	12.99	5.51	.98	2.44	.63
12 IPH10/J	2703537	12.0	106	2.38 - 4.75	9.13	1.18	-	1.85	5.55	13.90	5.91	.98	2.44	.67

* Design Factor based on EN 13155, and ASME B30.20.





IPH10/E

FOR HORIZONTAL LIFTING AND TRANSFER, WITH HANDLE

The IPH10E clamps are suitable for the lifting and transfer in horizontal position of non-sagging steel plates.

The clamp is equipped with a handle for simple and easy placement onto the plate.

For correct use of the clamp, please consult fig. 2 & 3.

These clamps must be used in pairs or more.

fig. 1

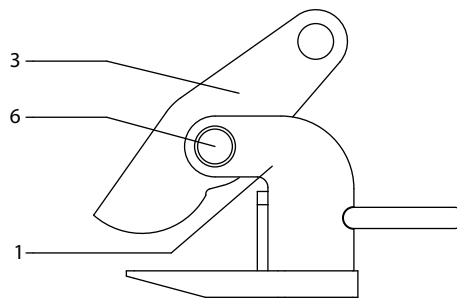
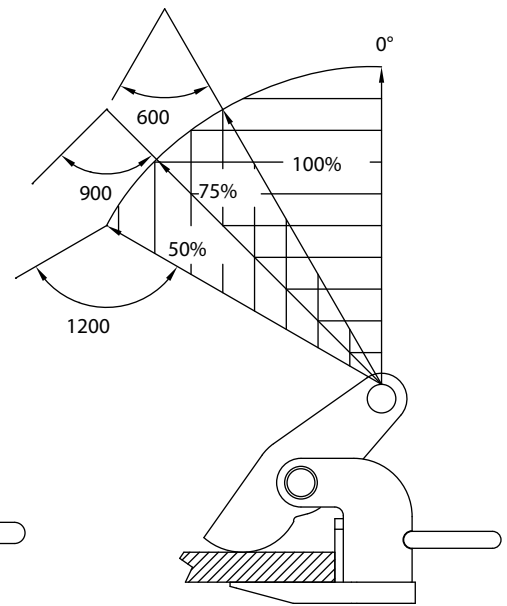


fig. 2



Spare parts for IPH10/E lifting clamps: Order no.

- | | |
|------------------------------|------|
| 1. body complete | 1041 |
| 3. ccamsegment complete | 1234 |
| 6. camsegment shaft complete | 1046 |

Dimensions in mm

Model	Stock No.	WLL Per Pair (t.)	Weight Per Pair (kg.)	Jaw A	B	C	D	E	F	G	H	J	K	L
2 IPH10/E	3542	2,0	11,0	0-60	117	16	-	22	109	256	110	20	40	9
3 IPH10/E	3543	3,0	15,0	0-60	117	20	-	26	109	266	120	20	48	11
4,5 IPH10/E	3544	4,5	21,0	0-60	132	25	-	30	104	280	130	20	48	12
6 IPH10/E	3545	6,0	26,0	0-60	143	25	-	36	123	320	130	20	48	14
9 IPH10/E	3546	9,0	37,0	0-60	157	30	-	43	133	330	140	25	62	16
12 IPH10/E	3547	12,0	43,0	0-60	172	30	-	47	141	353	150	25	62	17

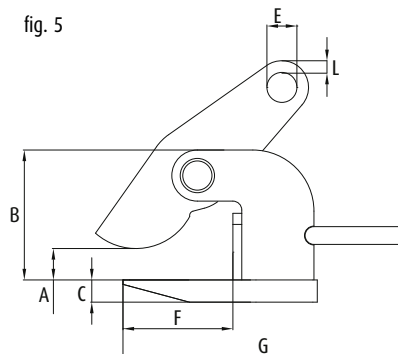
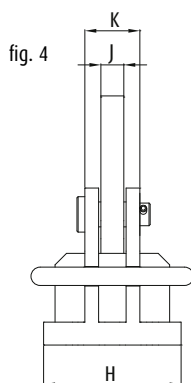
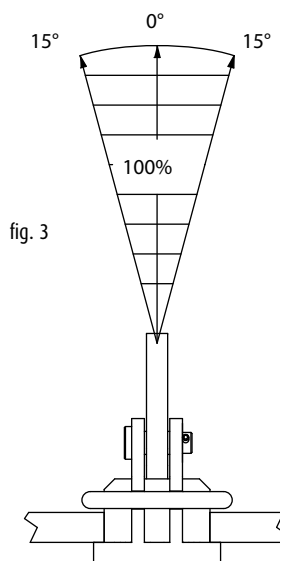
3 IPH10/JE	3553	3,0	18,0	60-120	177	20	-	26	109	266	120	20	48	11
4,5 IPH10/JE	3554	4,5	24,0	60-120	192	25	-	30	104	280	130	20	48	12
6 IPH10/JE	3555	6,0	30,0	60-120	203	25	-	36	123	320	130	20	48	14
9 IPH10/JE	3556	9,0	41,0	60-120	217	30	-	43	133	330	140	25	62	16
12 IPH10/JE	3557	12,0	48,0	60-120	232	30	-	47	141	353	150	25	62	17

* Design Factor based on EN 13155, and ASME B30.20.

Tlf./Phone + 47 63 87 10 80 www.transportutstyr.no



- Available in capacities of 0.5 thru 12 metric tons (Higher WLL and jaw openings are available upon request).
- Wide variety of jaw openings available: 0 to 120mm | 0" - 4.75".
- Welded alloy steel body for strength and smaller size. Forged alloy components, where required.
- Individually Proof Tested to 2 times the Working Load Limit with certification.
- Company name (CrosbyIP), logo, Working Load Limit and jaw opening permanently stamped on body.
- Each product is individually serialized, with the serial number and Proof Load test date stamped on body. Serial number is included on the test certificate.
- With maintenance and warranty logbook.
- Maintenance replacement parts are available.
- Manufactured by a ISO 9001 facility.
- All sizes are RFID EQUIPPED.



Dimensions in inches

Model	Stock No.	WLL Per Pair (t.)	Weight Per Pair (lbs.)	Jaw A	B	C	D	E	F	G	H	J	K	L
2 IPH10/E	2703542	2.0	24.3	0 - 2.38	4.61	.63	-	.87	4.29	10.08	4.33	.79	1.57	.35
3 IPH10/E	2703543	3.0	33.1	0 - 2.38	4.61	.79	-	1.02	4.29	10.47	4.72	.79	1.89	.43
4.5 IPH10/E	2703544	4.5	46.3	0 - 2.38	5.20	.98	-	1.18	4.09	11.02	5.12	.79	1.89	.47
6 IPH10/E	2703545	6.0	57.3	0 - 2.38	5.63	.98	-	1.42	4.84	12.60	5.12	.79	1.89	.55
9 IPH10/E	2703546	9.0	81.6	0 - 2.38	6.18	1.18	-	1.69	5.24	12.99	5.51	.98	2.44	.63
12 IPH10/E	2703547	12.0	94.8	0 - 2.38	6.77	1.18	-	1.85	5.55	13.90	5.91	.98	2.44	.67
3 IPH10/JE	2703553	3.0	39.7	2.38 - 4.75	6.97	.79	-	1.02	4.29	10.47	4.72	.79	1.89	.43
4.5 IPH10/JE	2703554	4.5	52.9	2.38 - 4.75	7.56	.98	-	1.18	4.09	11.02	5.12	.79	1.89	.47
6 IPH10/JE	2703555	6.0	66.1	2.38 - 4.75	7.99	.98	-	1.42	4.84	12.60	5.12	.79	1.89	.55
9 IPH10/JE	2703556	9.0	90.4	2.38 - 4.75	8.54	1.18	-	1.69	5.24	12.99	5.51	.98	2.44	.63
12 IPH10/JE	2703557	12.0	106	2.38 - 4.75	9.13	1.18	-	1.85	5.55	13.90	5.91	.98	2.44	.67

* Design Factor based on EN 13155, and ASME B30.20.





FOR HORIZONTAL LIFTING OF SAGGING MATERIAL

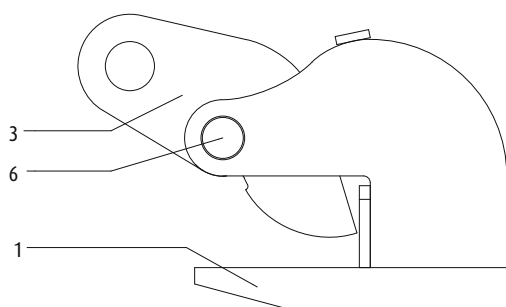
The IPHOZ horizontal lifting clamp is to be used for lifting and transferring, in the horizontal position, of thin sheet and other materials that will sag or bend when lifted.

The maximum top-angle is 60° when using IPHOZ clamps. The IPHOZ lifting clamps can also be applied in combination with long chains or two leg slings.

For correct use of the clamp, please consult fig. 2 & 3. These clamps must be used in pairs or more.

IPHOZ

fig. 1



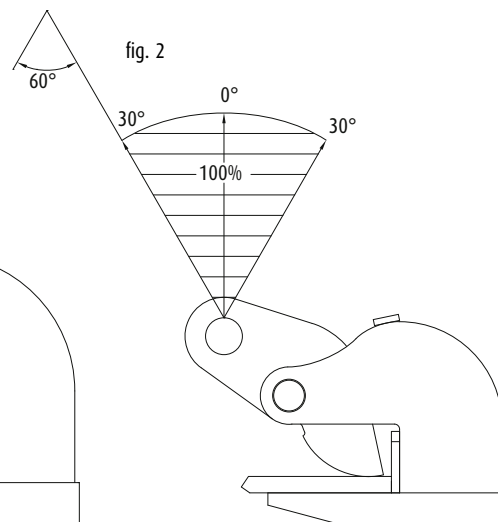
Spare parts for IPHOZ lifting clamps:

1. body complete
3. camsegment complete
6. camsegment shaft complete

Order no.

1041
1234
1046

fig. 2



Dimensions in mm

Model	Stock No.	WLL Per Pair (t.)	Weight Per Pair (kg.)	Jaw A	B	C	D	E	F	G	H	J	K
0,75 IPHOZ	5401	0,75	6,0	0-30	94	16	-	16	70	118	81	12	12
1,5 IPHOZ	5402	1,5	11,0	0-45	133	16	-	22	125	192	100	16	12
3 IPHOZ	5403	3,0	16,0	0-45	137	20	-	26	125	200	120	20	10
4,5 IPHOZ	5404	4,5	17,0	0-45	138	25	-	30	126	220	120	20	10
6 IPHOZ	5405	6,0	31,0	0-60	171	30	-	36	135	235	130	20	20
9 IPHOZ	5406	9,0	41,0	0-60	211	30	-	43	166	276	160	25	20
12 IPHOZ	5407	12,0	76,0	0-60	217	40	-	47	168	294	190	25	19
15 IPHOZ	5408	15,0	76,0	0-60	220	40	-	47	183	317	250	25	22

* Design Factor based on EN 13155, and ASME B30.20.

Tlf./Phone + 47 63 87 10 80 www.transportutstyr.no



- Available in capacities of 0.75 thru 15 metric tons.
- Wide variety of jaw openings available: 0 to 60mm | 0" - 2.38".
- Welded alloy steel body for strength and smaller size. Forged alloy components, where required.
- Individually Proof Tested to 2 times the Working Load Limit with certification.
- Company name (CrosbyIP), logo, Working Load Limit and jaw opening permanently stamped on body.
- Each product is individually serialized, with the serial number and Proof Load test date stamped on body. Serial number is included on the test certificate with maintenance and warranty logbook.
- Maintenance replacement parts are available.
- Manufactured by a ISO 9001 facility.
- All sizes are RFID EQUIPPED.

fig. 3

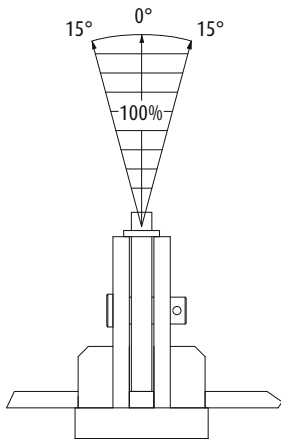


fig. 4

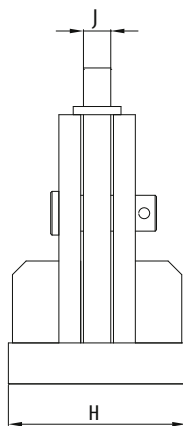
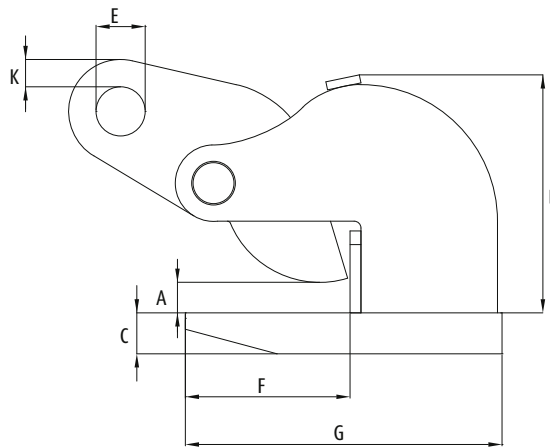
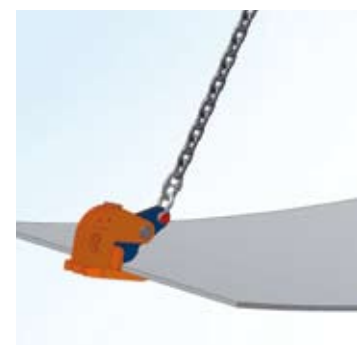


fig. 5



Dimensions in inches

Model	Stock No.	WLL Per Pair (t.)	Weight Per Pair (lbs.)	Jaw A	B	C	D	E	F	G	H	J	K
0.75 IPHOZ	2705401	0.75	13.2	0 - 1.19	3.70	.63	-	.63	2.76	4.65	3.19	.47	.47
1.5 IPHOZ	2705402	1.5	24.3	0 - 1.75	5.24	.63	-	.87	4.92	7.56	3.94	.63	.47
3 IPHOZ	2705403	3.0	35.3	0 - 1.75	5.39	.79	-	1.02	4.92	7.87	4.72	.79	.39
4.5 IPHOZ	2705404	4.5	37.5	0 - 1.75	5.43	.98	-	1.18	4.96	8.66	4.72	.79	.39
6 IPHOZ	2705405	6.0	68.3	0 - 2.38	6.73	1.18	-	1.42	5.31	9.25	5.12	.79	.79
9 IPHOZ	2705406	9.0	90.4	0 - 2.38	8.31	1.18	-	1.69	6.54	10.87	6.30	.98	.75
12 IPHOZ	2705407	12.0	168	0 - 2.38	8.54	1.57	-	1.85	6.61	11.57	7.48	.98	.75
15 IPHOZ	2705408	15.0	168	0 - 2.38	8.66	1.57	-	1.85	7.20	12.48	9.84	.98	.87



* Design Factor based on EN 13155, and ASME B30.20.



IPBC

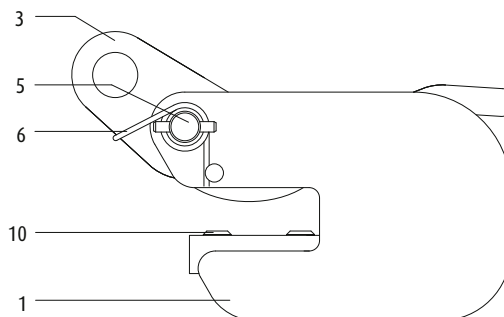
FOR HORIZONTAL TRANSFER – WITH PRETENSION

The IPBC horizontal lifting clamps have a pretension feature that allows the user to attach the clamps to the material for horizontal lifting and transfer of sagging and non-sagging material. These clamps may also be used to handle material that will be used in shears, bending and rolling machines or other fabrication equipment.

May also be used for turning beams from the "H" into the "I" position.

For correct use of the clamp, see fig. 2 & 3.

fig. 1



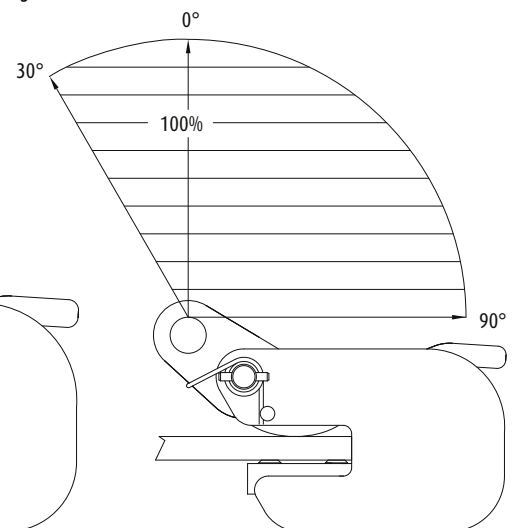
Spare parts for IPBC lifting clamps:

- 1. body complete
- 3. camsegment complete
- 5. spring for latch complete
- 6. camsegment shaft complete
- 10. pivot complete

Order no.

- 1041
- 1234
- 1063
- 1046
- 0098

fig. 2



Dimensions in mm

Model	Stock No.	WLL Each (t.)	Weight Each (kg.)	Jaw A	B	C	D	E	F	G	H	J	K	L
1 IPBC	0410	1,0	3,5	0 - 20	132	52	-	26	75	185	36	16	182	12
2 IPBC	0411	2,0	6,5	0 - 25	152	62	-	30	82	210	49	20	218	15
3 IPBC	0412	3,0	8,5	0 - 25	157	66	-	30	82	210	57	20	225	15

* Design Factor based on EN 13155, and ASME B30.20.

Tlf./Phone + 47 63 87 10 80 www.transportutstyr.no



- Available in capacities of 1 thru 3 metric tons. (Higher WLL and jaw openings are available upon request).
- Jaw openings available: 0 to 25mm | 0" - 1".
- Welded alloy steel body for strength and smaller size. Forged alloy components, where required.
- Individually Proof Tested to 2 times the Working Load Limit with certification.
- Company name (CrosbyIP), logo, Working Load Limit and jaw opening permanently stamped on body.
- Each product is individually serialized, with the serial number and Proof Load test date stamped on body. Serial number is included on the test certificate with maintenance and warranty logbook.
- Maintenance replacement kits are available.
- Manufactured by a ISO 9001 facility.
- All sizes are RFID EQUIPPED.

fig. 3

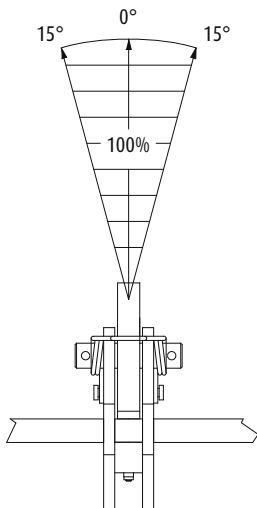


fig. 4

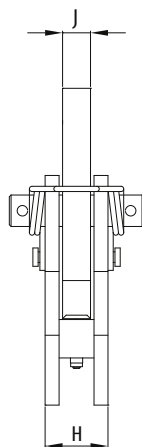
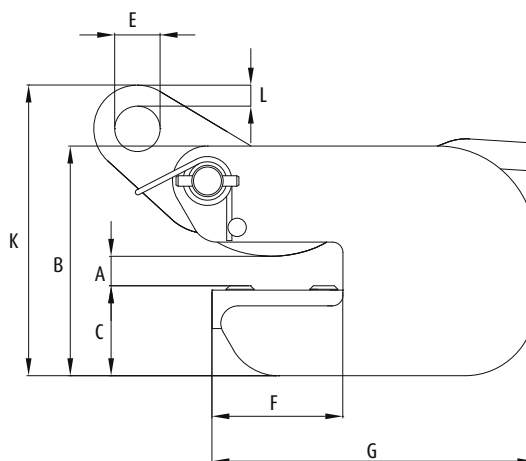


fig. 5



Dimensions in inches

Model	Stock No.	WLL Each (t.)	Weight Each (lbs.)	Jaw A	B	C	D	E	F	G	H	J	K	L
1 IPBC	2700410	1.0	7.72	0 - .75	5.20	2.05	-	1.02	2.95	7.28	1.42	.63	7.17	.47
2 IPBC	2700411	2.0	14.3	0 - 1.00	5.98	2.44	-	1.18	3.23	8.27	1.93	.79	8.58	.59
3 IPBC	2700412	3.0	18.8	0 - 1.00	6.18	2.60	-	1.18	3.23	8.27	2.24	.79	8.86	.59

* Design Factor based on EN 13155, and ASME B30.20.



IPHG(U)Z

FOR HORIZONTAL TRANSFER - WITH LOCKING DEVICE

The IPHGZ, IPHGUZ horizontal lifting clamps have a pretension locking feature that allows the user to attach the clamps to the material for horizontal lifting and transfer of sagging and non-sagging material. These clamps may also be used to handle material that will be used in shears, bending and rolling machines or other fabrication equipment. May also be used to move and lift structural shapes such as I-Beams, H-beams etc.

Available in two versions:

Model IPHGUZ: fitted with a hinged lifting eye. For correct use of the clamp, please consult fig. 2 & 6.

Model IPHGZ: fitted with a fixed lifting eye. For correct use of the clamp, please consult fig. 2 & 3.

Spare parts for IPHG(U)Z lifting clamps: Order no.

1. body complete	1041
2. hoisting eye complete	1235
3. camsegment complete	1234
4. latch complete	1233
5. spring for latch complete	1063
6. camsegment shaft complete	1046
7. hoisting eye shaft complete	1047
9. distance collar complete	1337
10. pivot complete (IPH6UZ)	0098
34. latch plate complete	1353

fig. 1

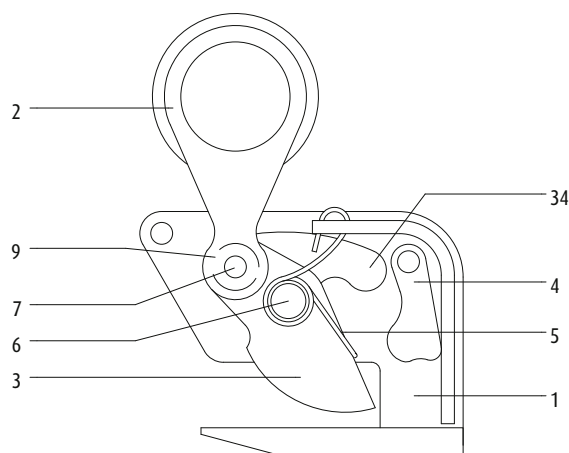
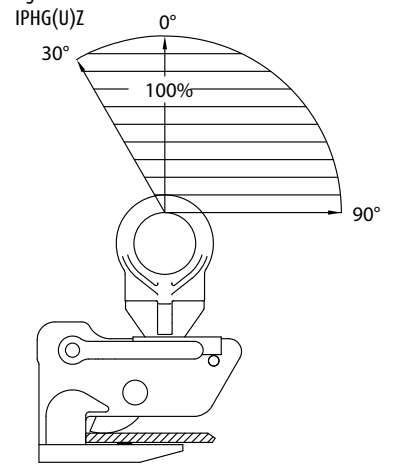


fig. 2



Dimensions in mm

Model	Stock No.	WLL Each (t.)	Weight Each (kg.)	Jaw A	B	C	D	E	F	G	H	J	K
0,75 IPHGZ	5451	0,75	4,0	0-25	82	148	206	50	99	98	-	12	22
1,5 IPHGZ	5452	1,5	7,3	0-25	110	200	250	50	118	90	-	20	28
3 IPHGZ	5453	3,0	12,3	0-40	120	227	305	70	148	120	-	25	32
4,5 IPHGZ	5454	4,5	25,0	0-40	120	284	381	70	181	155	-	30	40
1,5 IPHGUZ	5455	1,5	9,0	0-25	110	232	287	70	139	90	-	20	16
3 IPHGUZ	5456	3,0	19,9	0-40	119	253	348	75	175	120	-	25	20
4,5 IPHGUZ	5457	4,5	30,0	0-40	119	301	370	80	175	155	-	30	44

* Design Factor based on EN 13155, and ASME B30.20.

Tlf./Phone + 47 63 87 10 80 www.transportutstyr.no



- Available in capacities of 0.75 thru 4.5 metric tons (Higher WLL and jaw openings are available upon request).
- Jaw openings available: 0 to 40mm | 0" - 1.56".
- Welded alloy steel body for strength and smaller size. Forged alloy components, where required.
- Individually Proof Tested to 2 times the Working Load Limit with certification.
- Company name (CrosbyIP), logo, Working Load Limit and jaw opening permanently stamped on body.
- Each product is individually serialized, with the serial number and Proof Load test date stamped on body. Serial number is included on the test certificate with maintenance and warranty logbook.
- Maintenance replacement parts are available.
- Manufactured by a ISO 9001 facility.
- All sizes are RFID EQUIPPED.

fig. 6 IPHGUZ

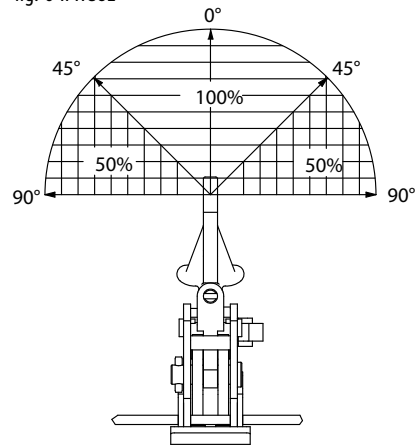


fig. 3

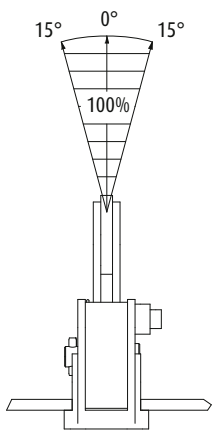


fig. 4

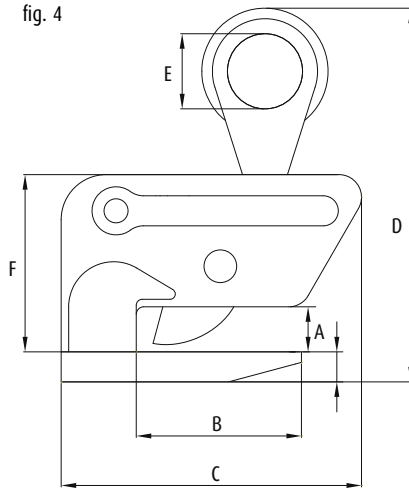
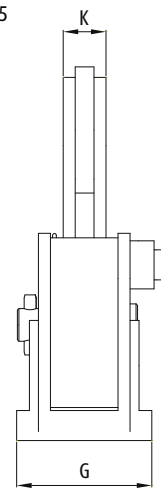


fig. 5



Dimensions in inches

Model	Stock No.	WLL Each (t.)	Weight Each (lbs.)	Jaw A	B	C	D	E	F	G	H	J	K
0.75 IPHGZ	2705451	0.75	8.82	0 - 1.00	3.23	5.83	8.11	1.97	3.90	3.86	-	.47	.87
1.5 IPHGZ	2705452	1.5	16.1	0 - 1.00	4.33	7.87	9.84	1.97	4.65	3.54	-	.79	1.10
3 IPHGZ	2705453	3.0	27.1	0 - 1.56	4.72	8.94	12.01	2.76	5.83	4.72	-	.98	1.26
4.5 IPHGZ	2705454	4.5	55.1	0 - 1.56	4.72	11.18	15.00	2.76	7.13	6.10	-	1.18	1.57
1.5 IPHGUZ	2705455	1.5	19.8	0 - 1.00	4.33	9.13	11.30	2.76	5.47	3.54	-	.79	.63
3 IPHGUZ	2705456	3.0	43.9	0 - 1.56	4.69	9.96	13.70	2.95	6.89	4.72	-	.98	.79
4.5 IPHGUZ	2705457	4.5	66.1	0 - 1.56	4.69	11.85	14.57	3.15	6.89	6.10	-	1.18	1.73

* Design Factor based on EN 13155, and ASME B30.20.



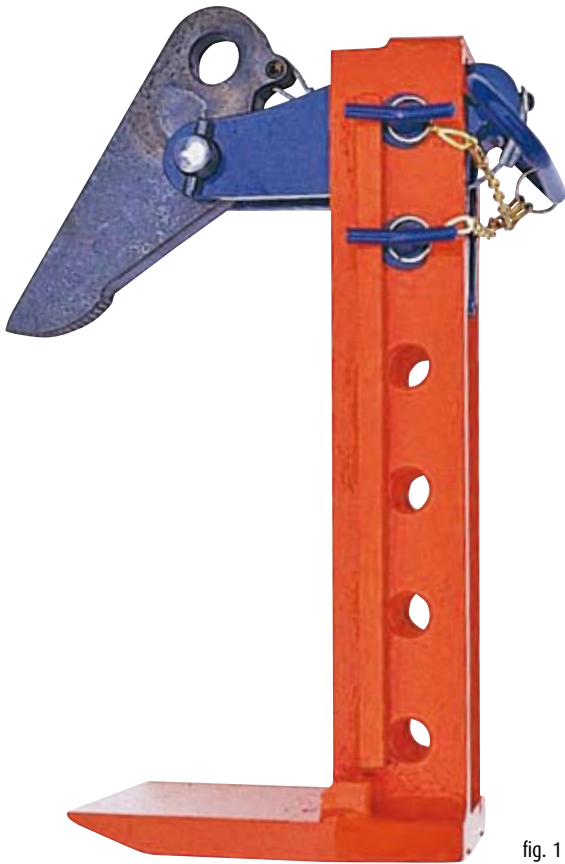
FOR THE LIFTING AND TRANSFER OF BUNDLES OF PLATES

The IPPE is suitable for the lifting and transfer of bundles of non-sagging steel plates in horizontal position.

The jaw opening can be easily adjusted. Raising the handle opens the clamp. This facilitates the easy and quick placing or removing of the clamp.

For correct use of the clamp, please consult fig. 2 & 3.

These clamps must be used in pairs or more.



IPPE

fig. 1

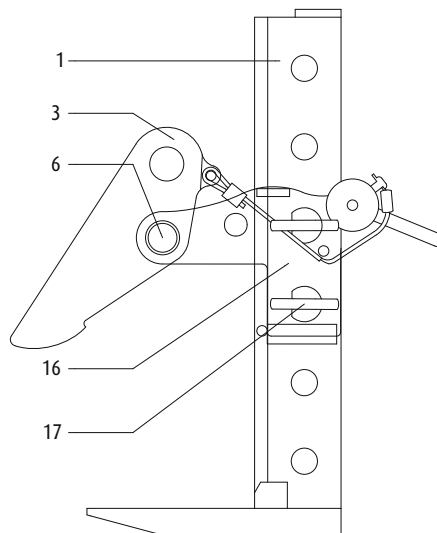
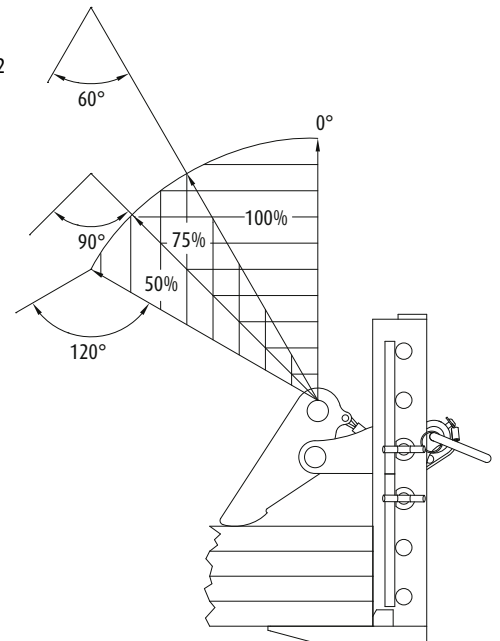


fig. 2



Spare parts for IPPE lifting clamps:

- 1. body complete
- 3. camsegment complete
- 6. camsegment shaft complete
- 16. camsegment holder complete
- 17. coupling pin complete

Order no.

- 1041
- 1234
- 1046
- 1237
- 1338

Dimensions in mm

Model	Stock No.	WLL Per Pair (t.)	Weight Per Pair (kg.)	Jaw A	B	C	D	E	F	G	H	J	K
3 IPPEB	0501	3,0	21	0-180	194	256	20	26	66	20	140	76	15
3 IPPED	0502	3,0	26	0-300	194	376	20	26	66	20	140	76	15
3 IPPEH	0503	3,0	28	0-420	194	496	20	26	66	20	140	76	15
6 IPPEH	0506	6,0	46	0-420	227	516	25	30	102	20	160	76	13
9 IPPEH	0509	9,0	62	0-420	270	566	25	34	122	20	190	76	21
12 IPPEH	0512	12,0	104	0-420	292	588	30	40	133	25	200	97	18

* Design Factor based on EN 13155, and ASME B30.20.

